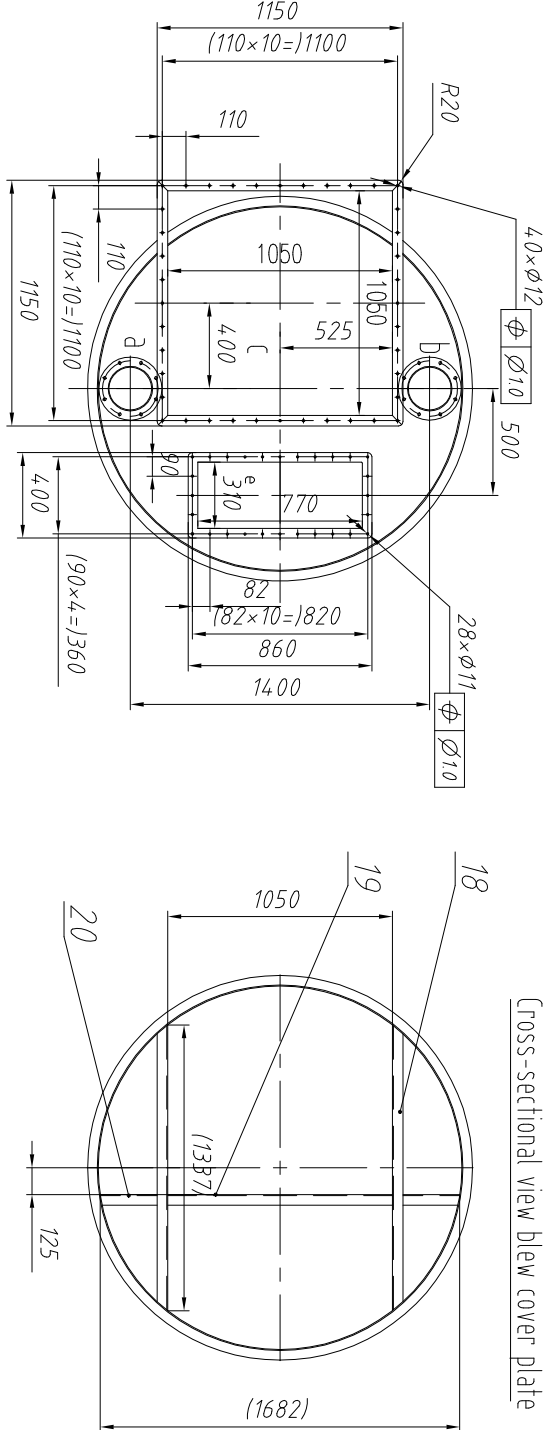
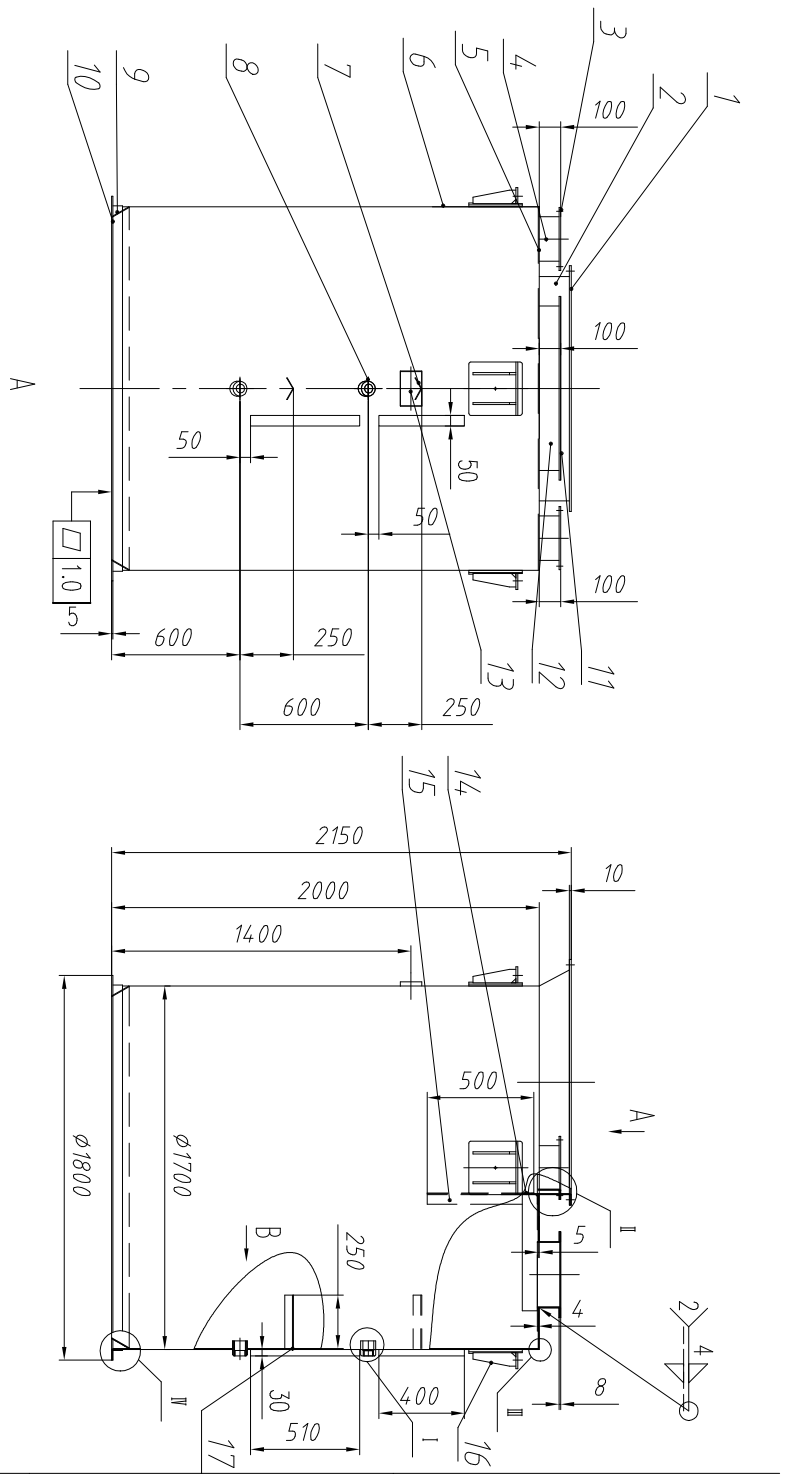


- 1.The equipment must be manufactured according to NB/T47003.1-2009 《THE STANDARD OF COMMON PRESSURE WELDING VESSEL》.
- 2.Welding using manual arc welding,electrode type J422, after soldering welding slag removal.
- 3.The edge should be chamfered, The welding line should be continuous.
- 4.The thread NP1-1/2" were recovered by tap after welding.
- 5.The locations of level sensor seat ,overhaul ,nameplate, nozzles and others welding orientation should be defined according to the layout of daily bin.
- 6.The welding line should be tested with kerosene to ensure quality of welding eligible.
- 7.Machined surface $\sqrt[125]{}$, thread $\sqrt[32]{}$.

20	GB/T 706-2016	Angel iron L75x50x5	2	Q235B	1.6	3.2	L=311
19	GB/T 706-2016	Angel iron L75x50x5	1	Q235B	5.1	5.1	L=1050
18	GB/T 706-2016	Angel iron L75x50x5	2	Q235B	6.4	12.8	L=1337
17	GB/T 13237-2013	wire channel t2	1	Q235B	1.5	1.5	L=500 and t=10mm
16	GB/T 13237-2013	Seat t10	1	Q235B	8.1	8.1	
15	GB/T 706-2016	Angel iron L50x50x5	2	Q235B	1.9	3.8	L=500
14	GB/T 3274-2017	Plate 1682x500x3	1	Q235B	19.8	19.8	
13	GB/T 13237-2013	Nameplate seat t2	1	Q235B	0.320	0.32	
12	GB/T 3274-2017	Feed port pipe t4	1	Q235B	6.7	6.7	
11	GB/T 3274-2017	Feed port flange t8	1	Q235B	6.6	6.6	
10	GB/T 3274-2017	Plate t5	1	Q235B	10.7	10.7	
9	GB/T 706-2016	Angel iron L50x50x5	1	Q235B	20.1	20.1	L=5340
8	GB/T 702-2017	level switch seat	2	Q235B	0.9	1.8	
7	GB/T 3274-2017	level switch cover	2	Q235B	1.2	2.4	
6	GB/T 3274-2017	Upper shell barrel t4	1	Q235B	332.9	332.9	
5	GB/T 3274-2017	Upper shell cover plate t5	1	Q235B	34.5	34.5	
4	GB/T 3274-2007	Pressure switch port t4	2	Q235B	1.9	1.9	3.82
3	GB/T 3274-2017	Pressure switch port flange t8	2	Q235B	2.15	4.3	
2	GB/T 3274-2017	Dust collector port t4	1	Q235B	19.84	19.84	
1	GB/T 3274-2017	Dust collector port flange t10	1	Q235B	17.2	17.2	
No.	Code	Part Name	Qty	Material	Single Weight		Remark
	Code Number				Weight	Weight	
							MESNAC CO., LTD
				weldment		UPPER SHELL	
	Mark	Modified file No.	Signature	Date	Mark	Weight	Scale
	管建波	20250408	Standarder				
	Checker		Approver				
	管建波	20250408	Security	重要校核	20250407	止	
	Verifier		View				
	Processor						
				Total No.	No.	020113010000379	
						Xjylba.13A.01	



Gross-sectional view blew cover plate

